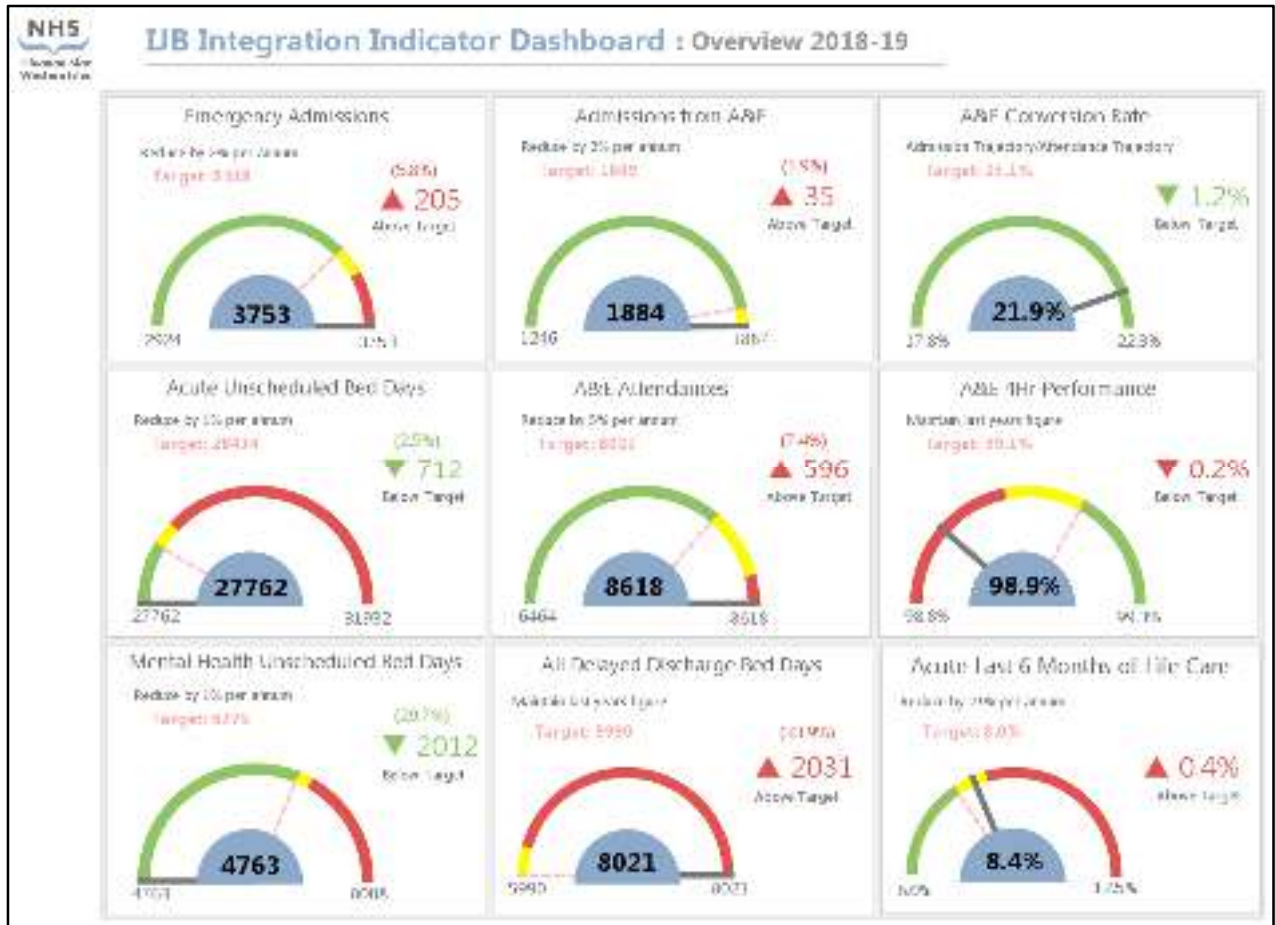
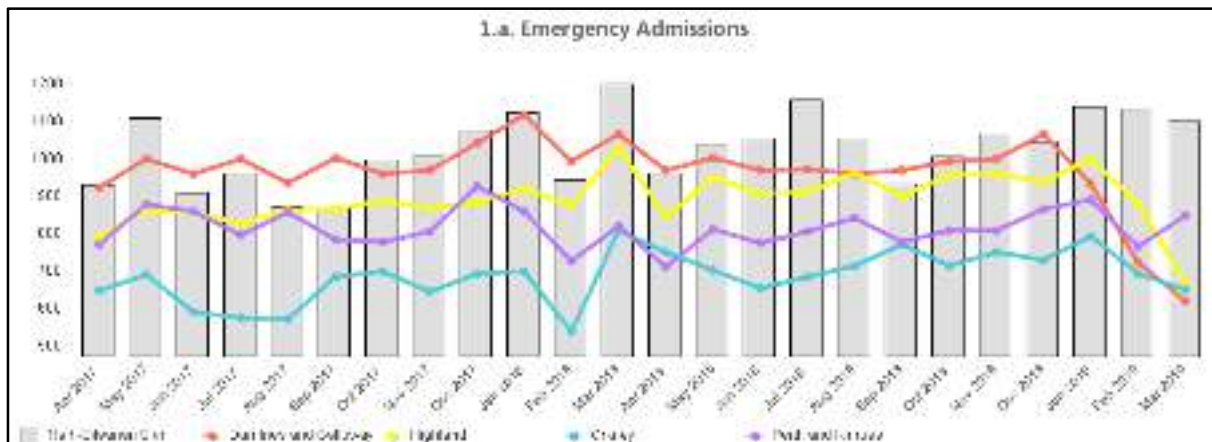


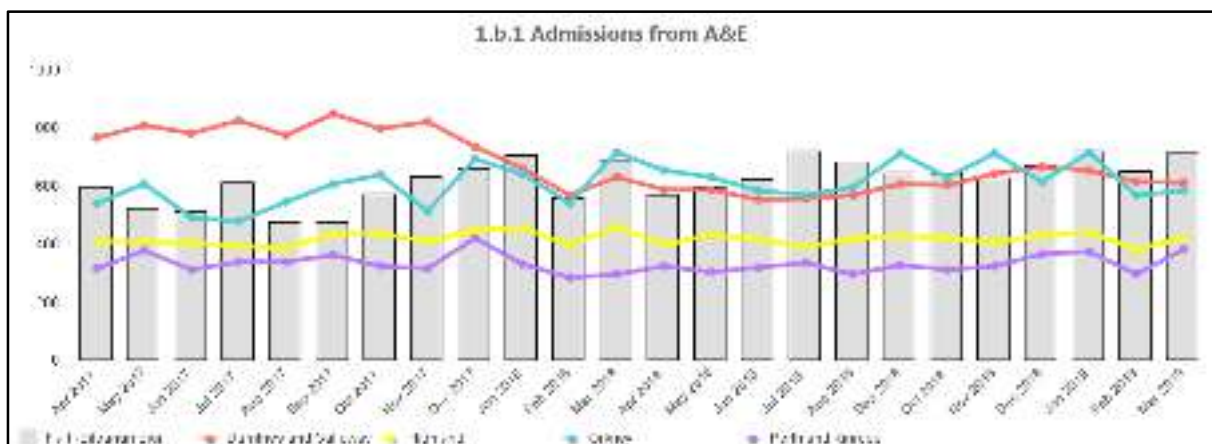
Annex 1 - Overview 2018-19



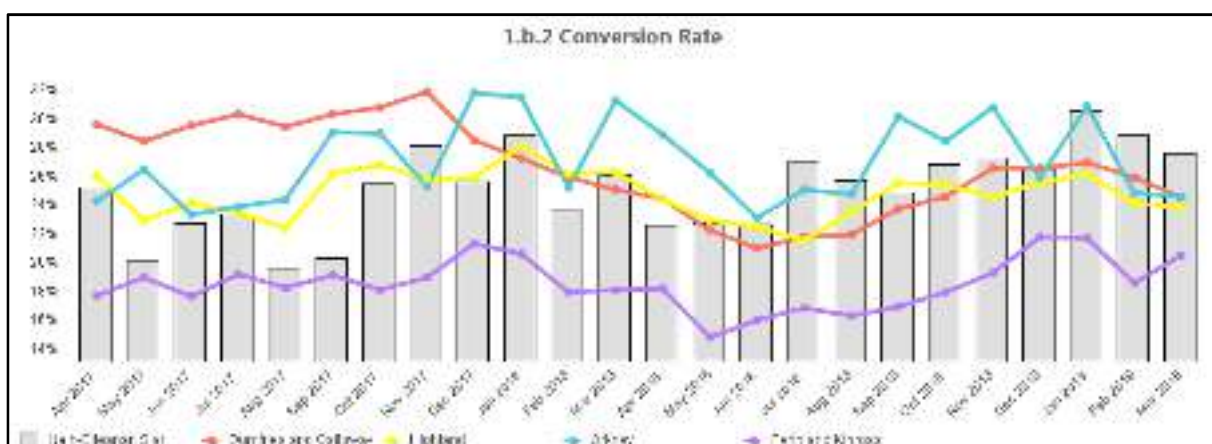
Emergency Admissions



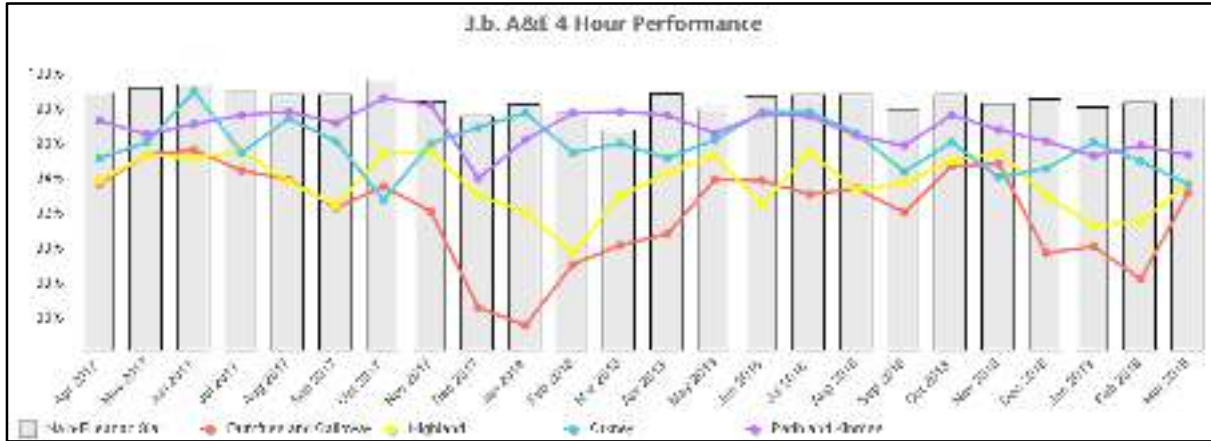
Admissions from A&E



A&E Conversion Rate



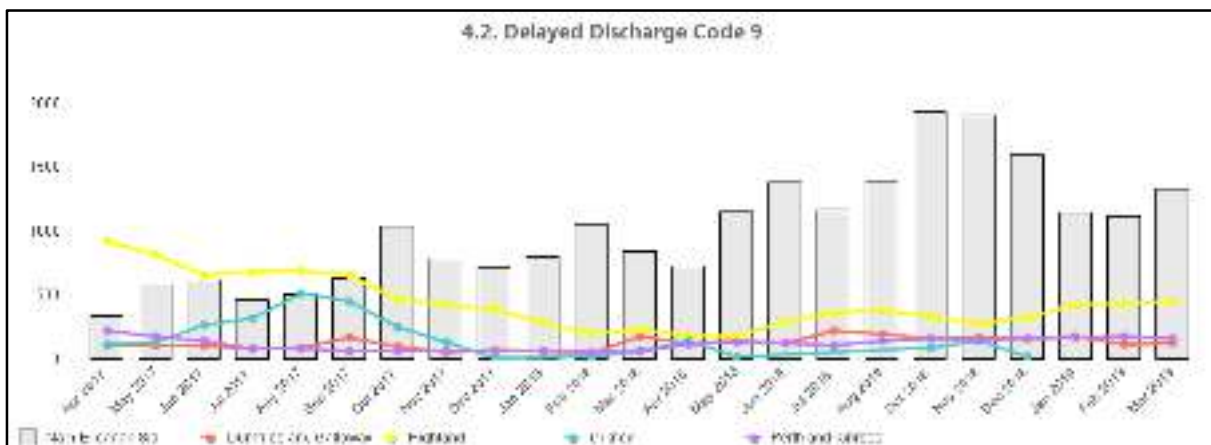
A&E 4 Hr Performance



Delayed Discharge – All Reasons



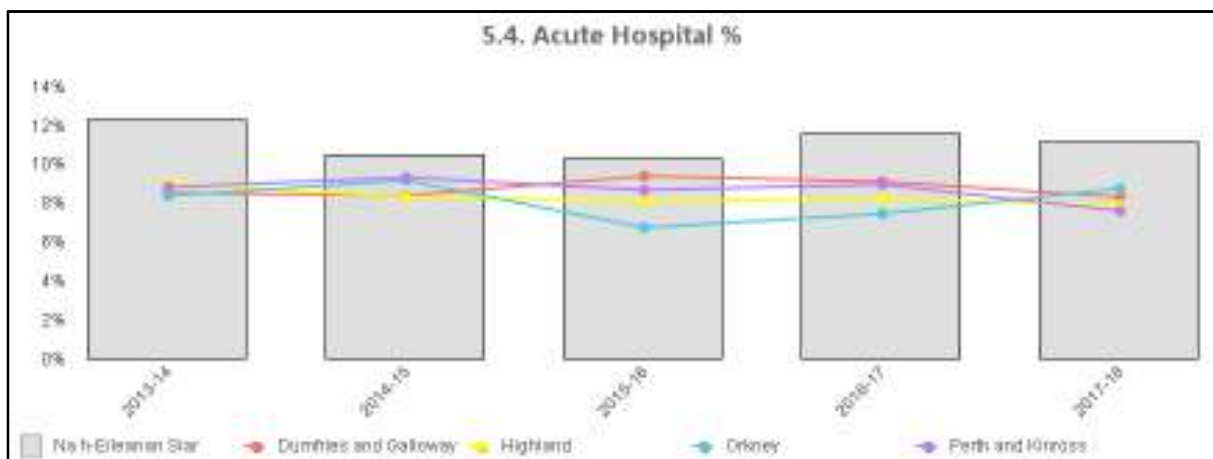
Delayed Discharge - Code 9



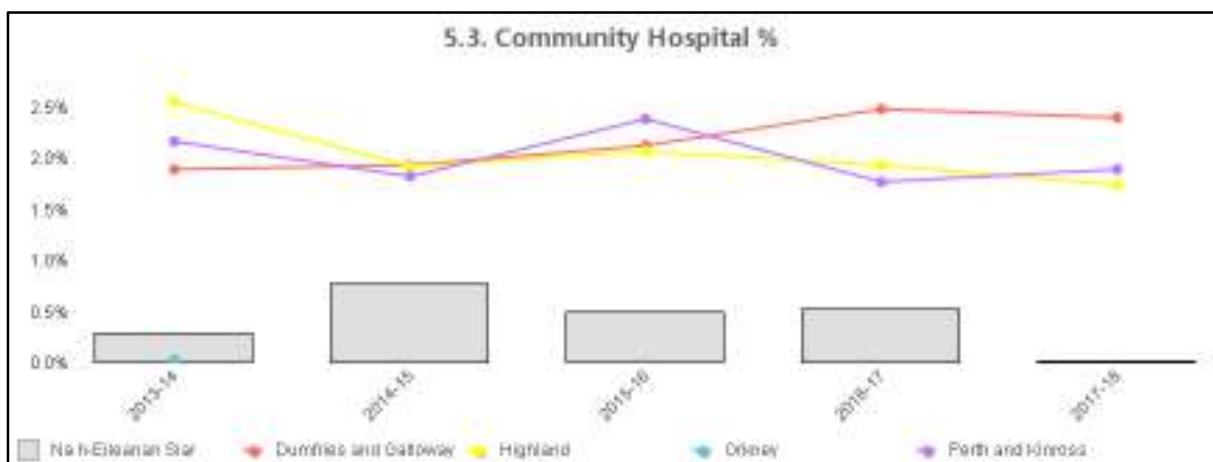
Delayed Discharge – Health & Social Care



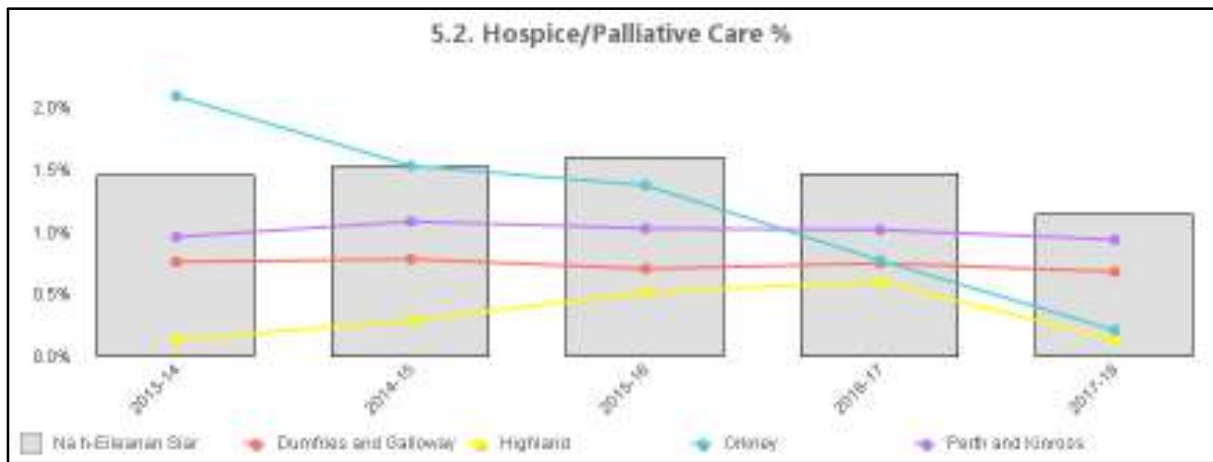
Last 6 Months of Life Care – Acute Hospital %



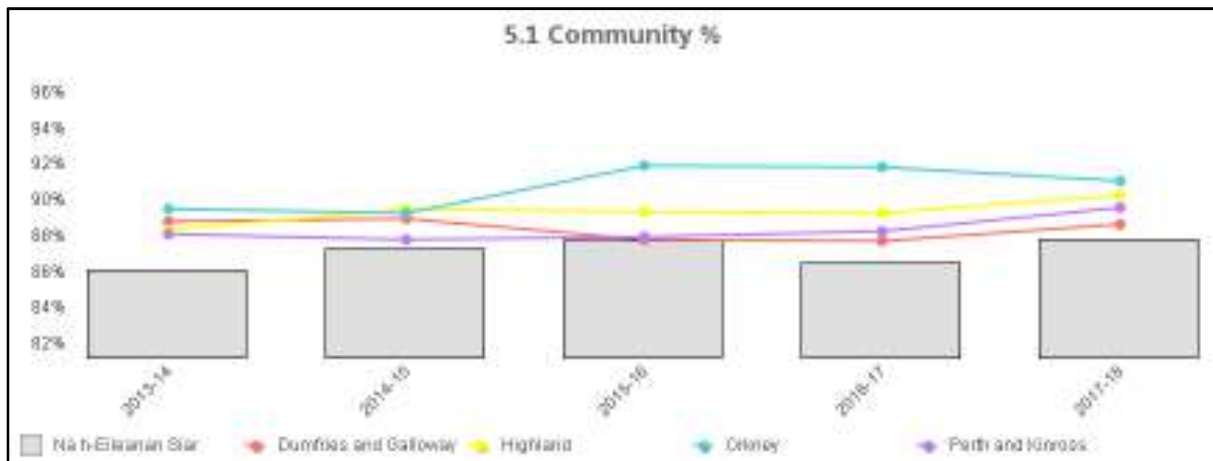
Last 6 Months of Life Care – Community Hospital %



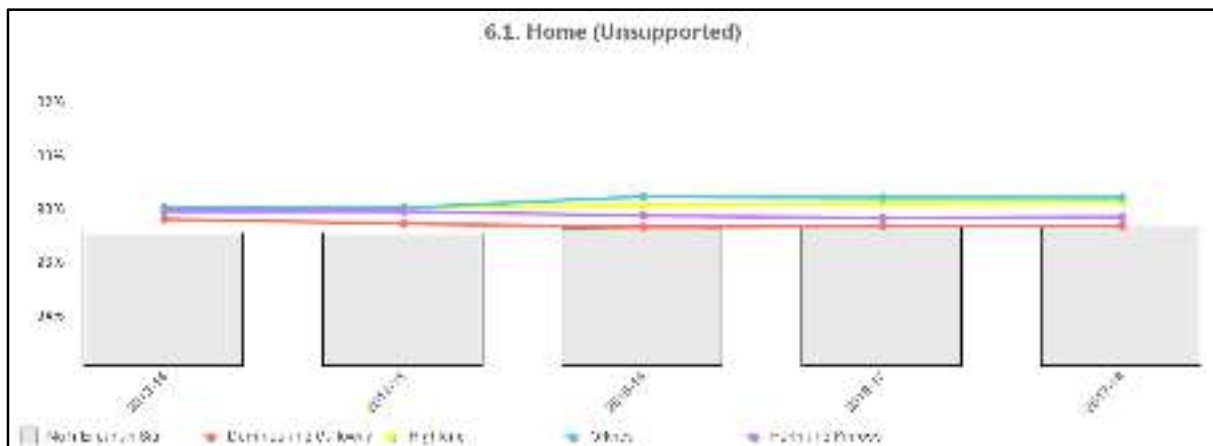
Last 6 Months of Life Care – Hospice/Palliative Care %



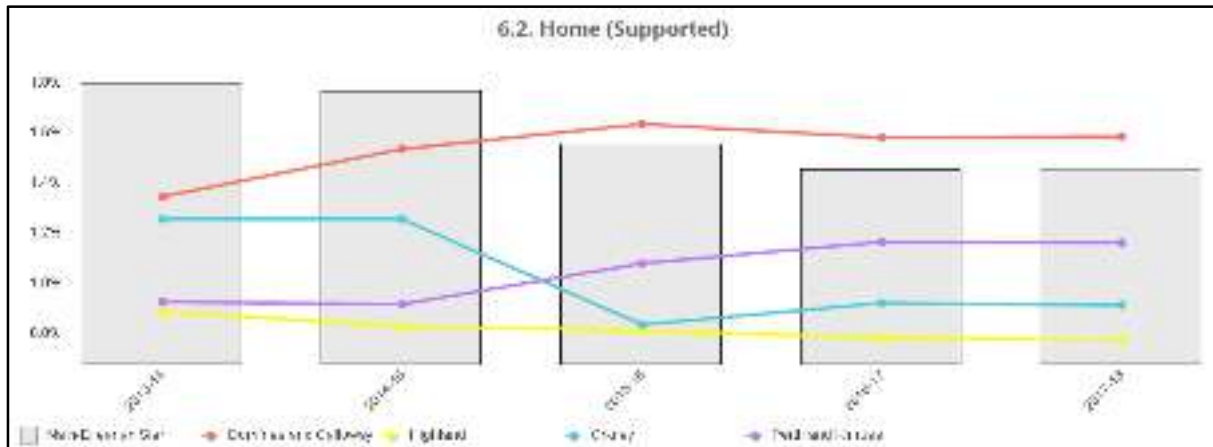
Last 6 Months of Life Care – Community %



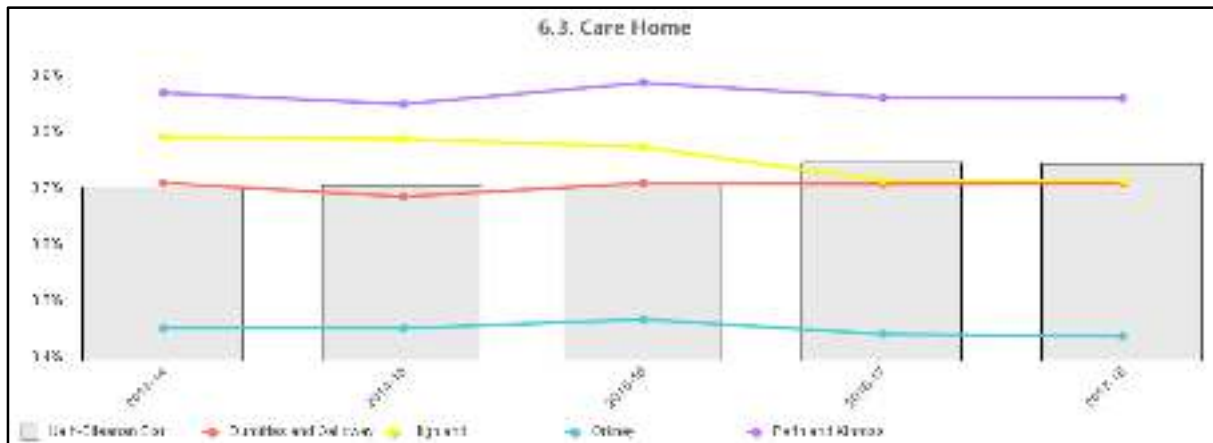
Balance of Care – Home (Unsupported) All Ages %



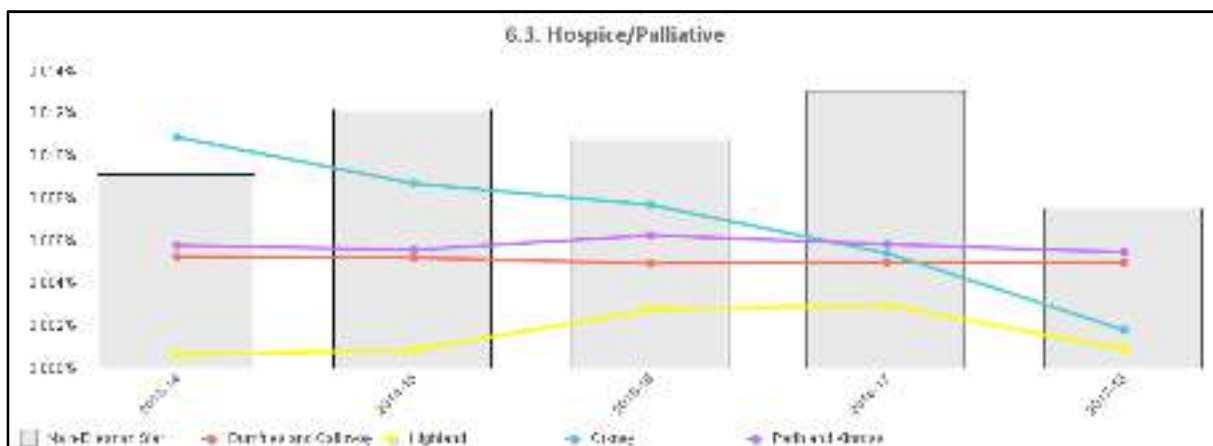
Balance of Care – Home (Supported) All Ages %



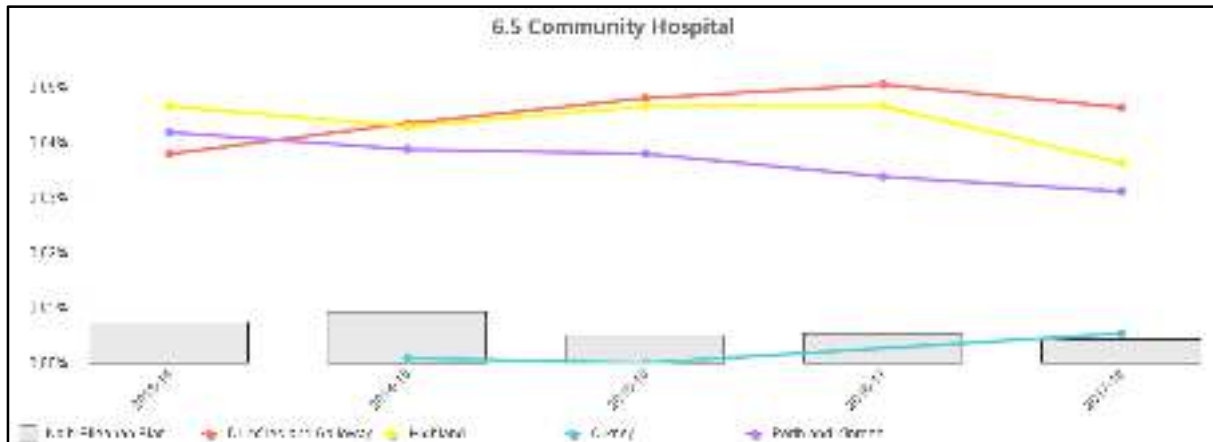
Balance of Care – Care Home All Ages %



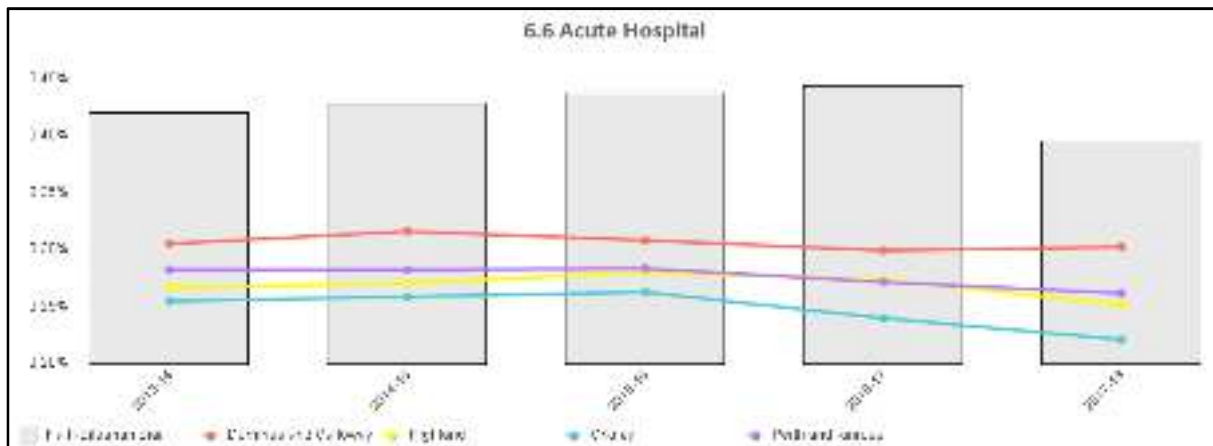
Balance of Care – Hospice/Palliative Care All Ages %



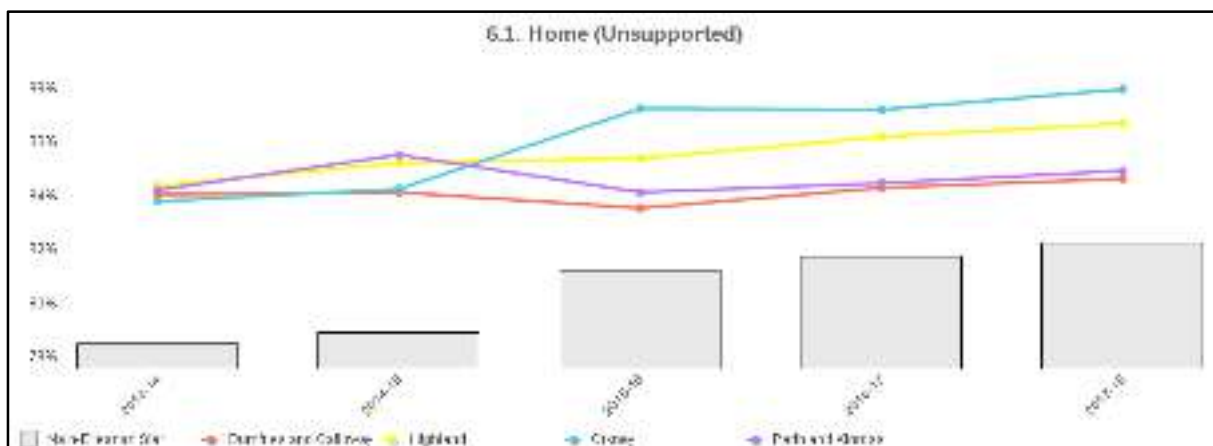
Balance of Care – Community Hospital All Ages %



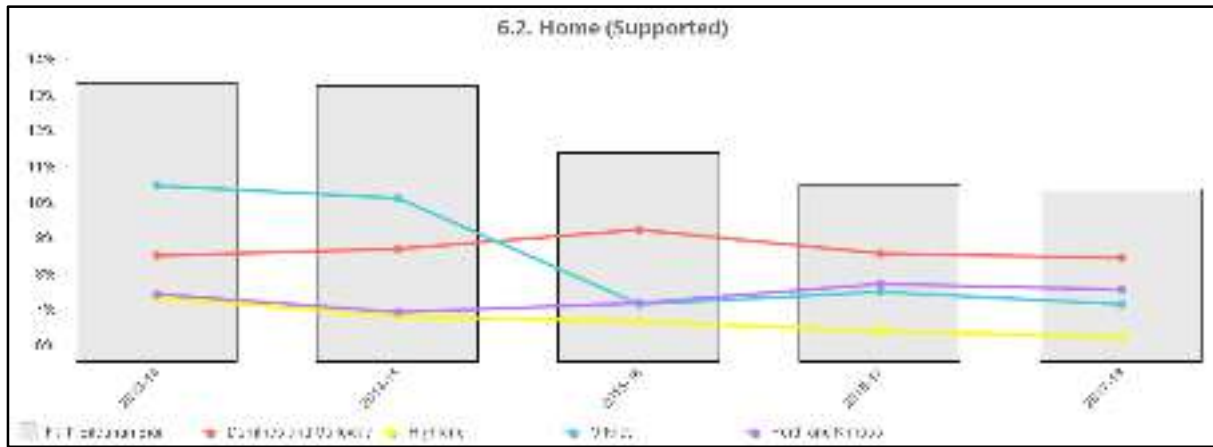
Balance of Care – Acute Hospital All Ages %



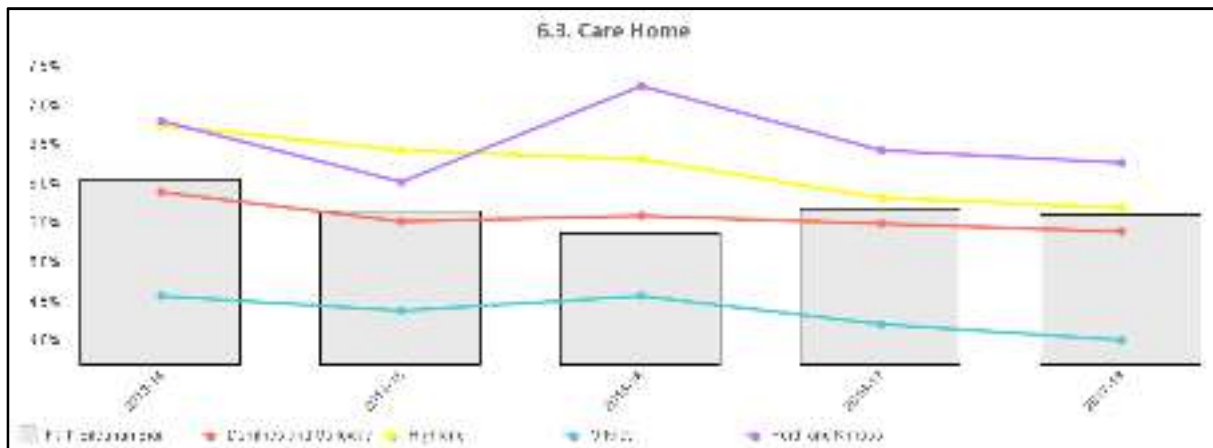
Balance of Care – Home (Unsupported) Age 75+ %



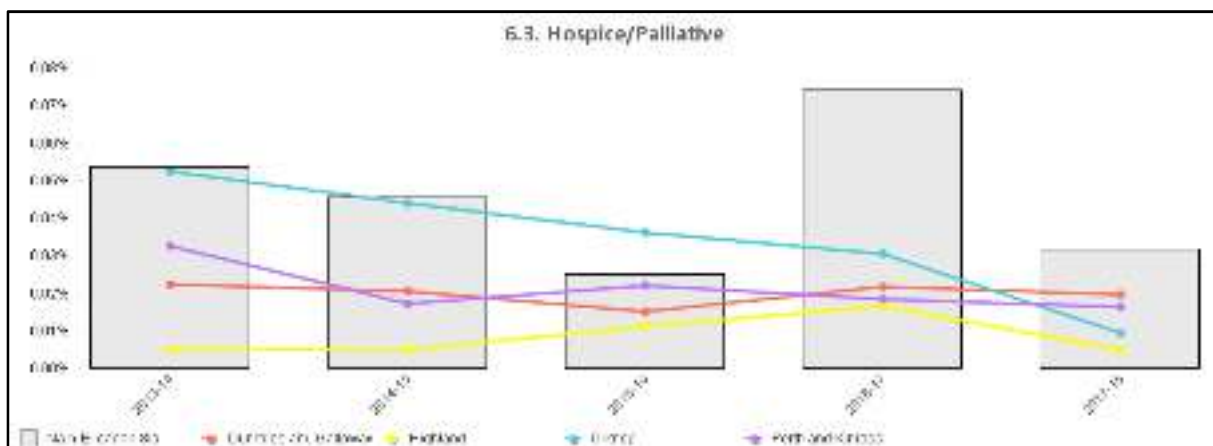
Balance of Care – Home (Supported) Age 75+ %



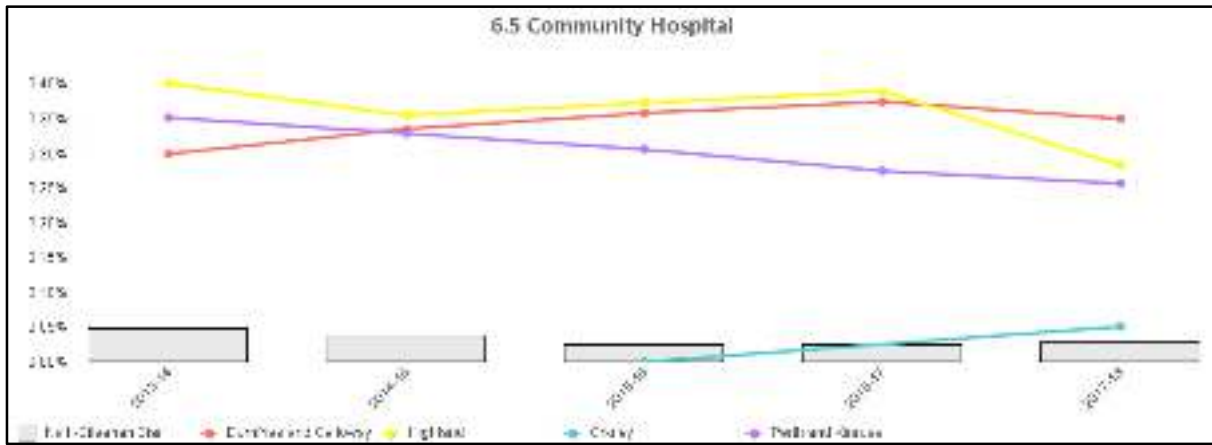
Balance of Care – Care Home Age 75+ %



Balance of Care – Hospice/Palliative Care Age 75+ %



Balance of Care – Community Hospital Age 75+ %



Balance of Care – Acute Hospital Age 75+ %

